

Go with the flow

“Join with us to find better treatment options”

Radiology and Imaging Sciences at the National Institutes of Health (NIH) Clinical Center in Bethesda, Maryland, is looking for volunteers to participate in a 24-month study. The study is investigating if the use of Magnetic Resonance Imaging (MRI) is an effective method of measuring plaque that builds up inside of arteries in comparison to other measurement methods.



You may be eligible if you are:

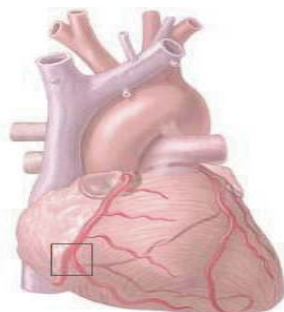
- 55 years of age or older
- willing to travel to the NIH for follow-up visits

You may not be eligible if you:

- are claustrophobic
- are hypersensitive/allergic to iodine contrast
- have a pacemaker
- have an automatic implantable cardioverter defibrillator implant (AICD)



Blockage in right coronary artery



For more information, Please Call
1-800-411-1222 TTY: 1-866-411-1010

se habla español

Or go online, clinicaltrials.gov
Refer to study: 10-CC-0214



The NIH Clinical Center, America's research hospital, is located on the Metro red line in Bethesda, Maryland.